

# GAIN – TOT FORTIFICATION WORKSHOP



[www.gainhealth.org](http://www.gainhealth.org)

## Monitoring and Evaluation of GAIN-Assisted Food Fortification Programs

Fabian Rohner  
Senior Associate  
*Performance Measurement and Research*

Dakar  
December 2009



INVESTING IN PARTNERSHIPS TO STOP MALNUTRITION

## Overview

- GAIN's **Logic Model** and Framework
- M&E of National FFP
  - Monitoring the **Supply and Quality** of Fortified Foods
  - Monitoring **Access, Utilization, Reach and Coverage** of Fortified Foods
  - Evaluation of Health an **Nutrition Impact**
- GAIN **Guidelines**

ACTIVITIES

OUTPUTS

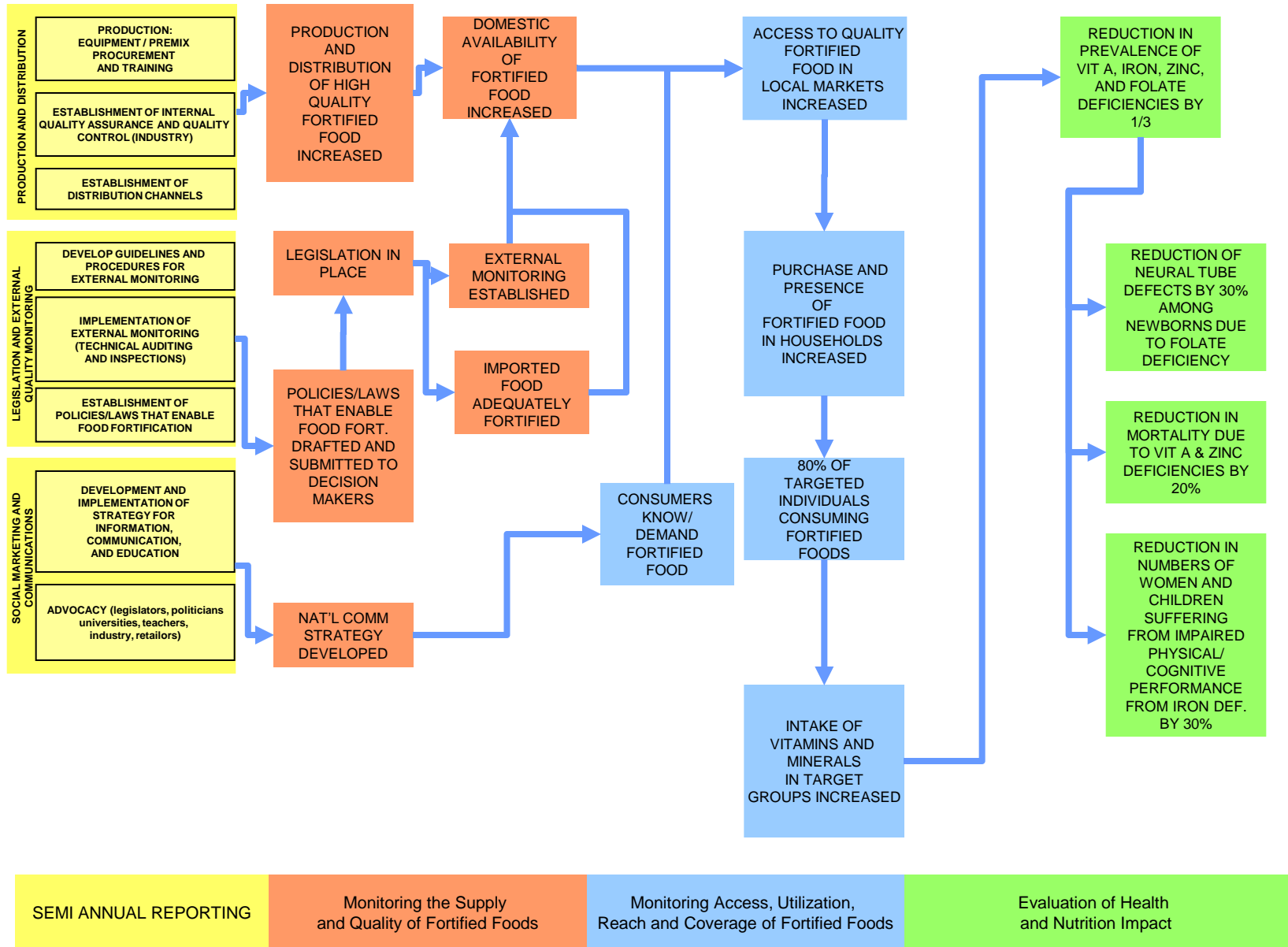
OUTCOMES

IMPACTS

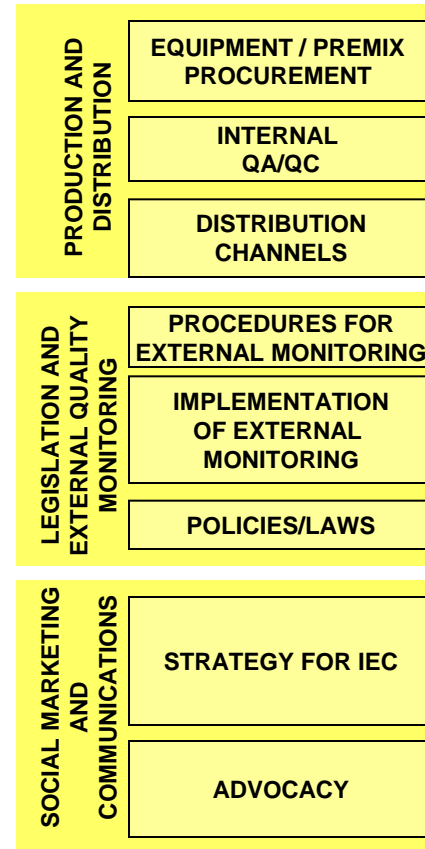
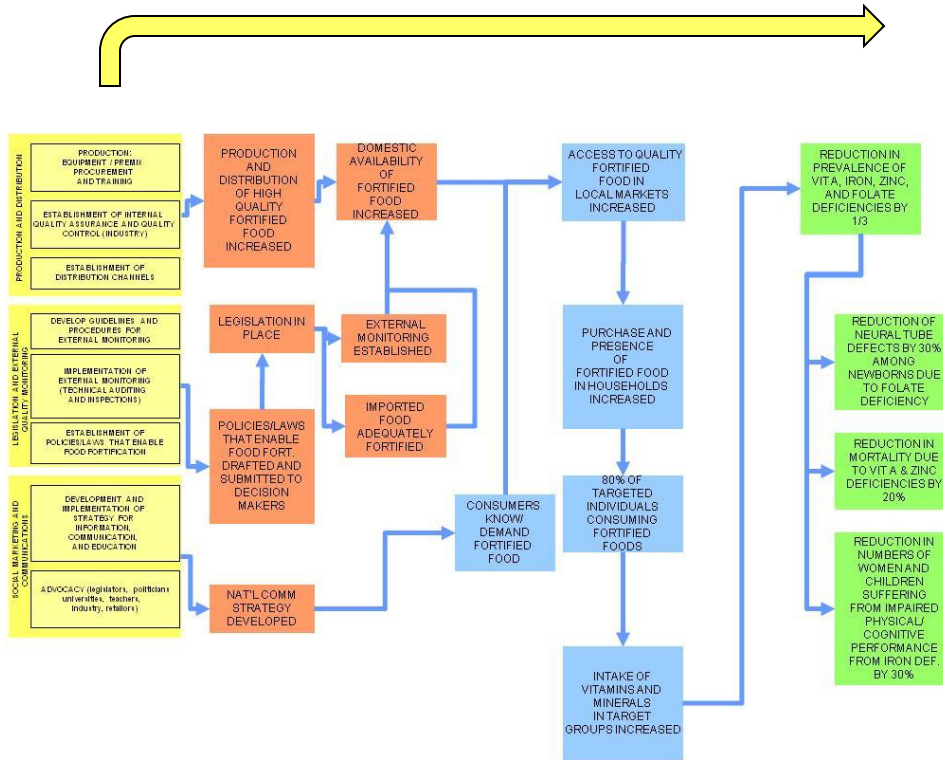
SHORT TERM

MID TERM

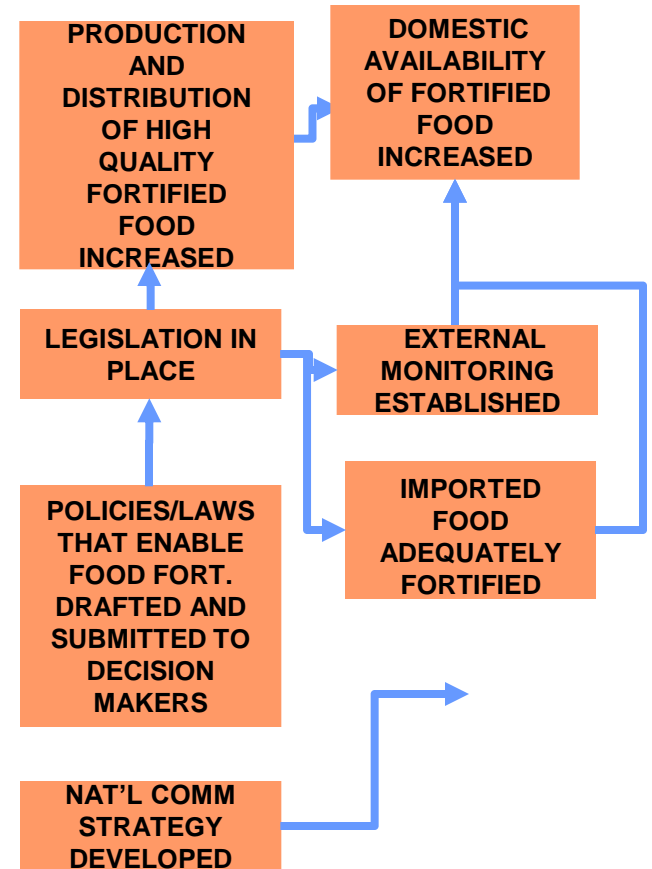
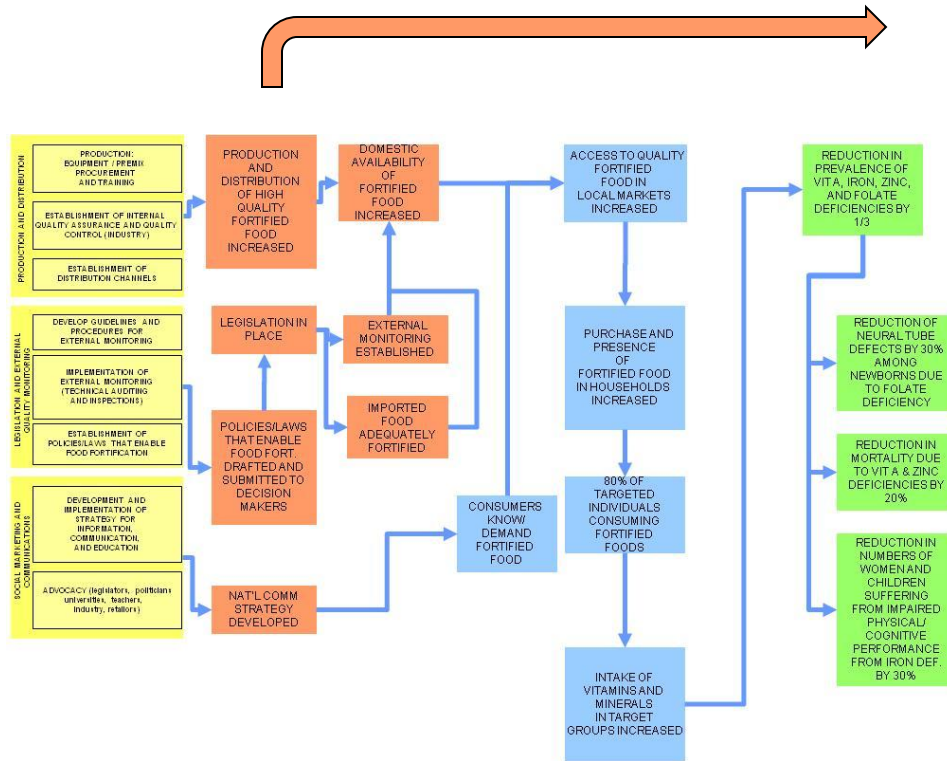
LONG-TERM



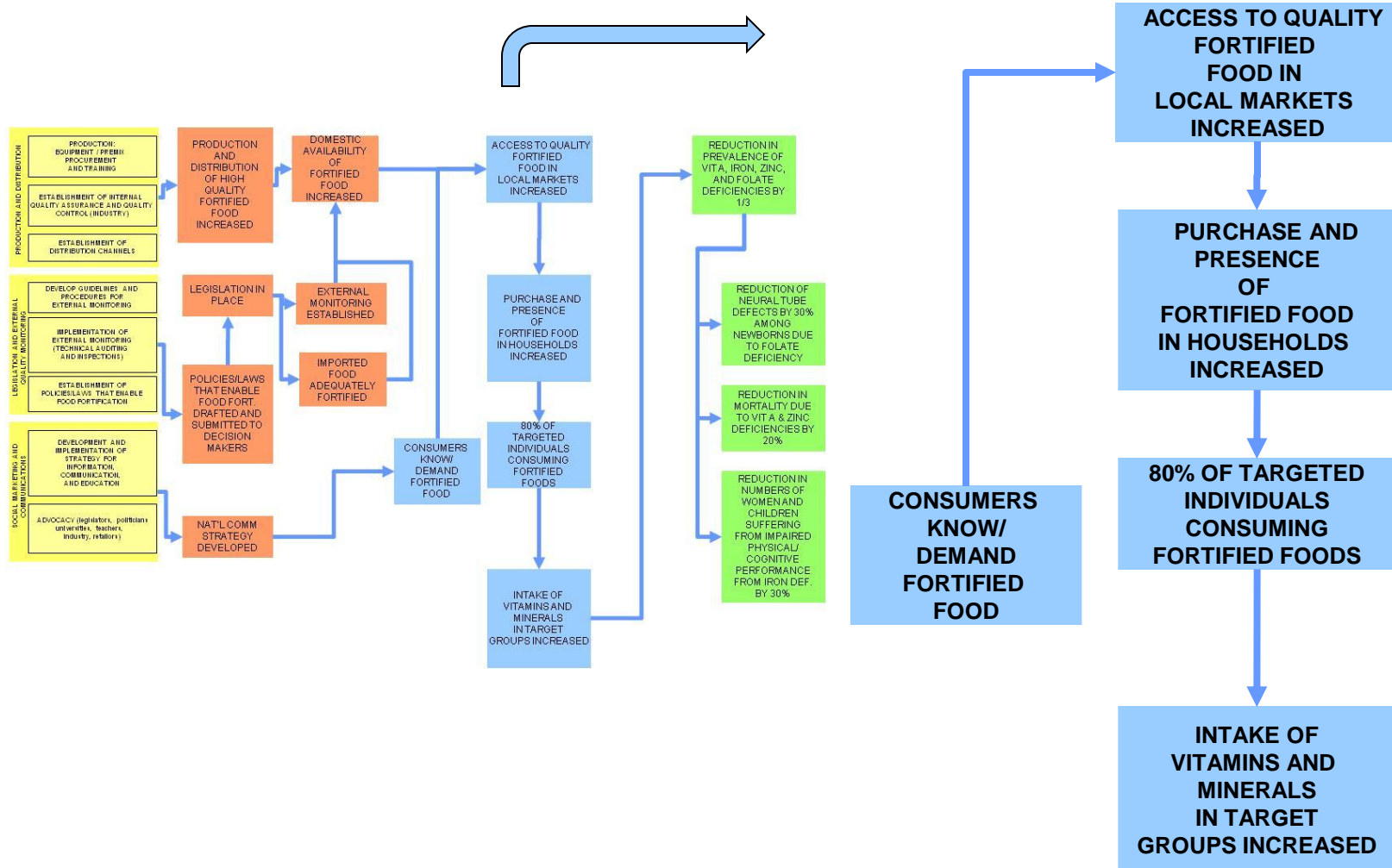
# GAIN's Log Model



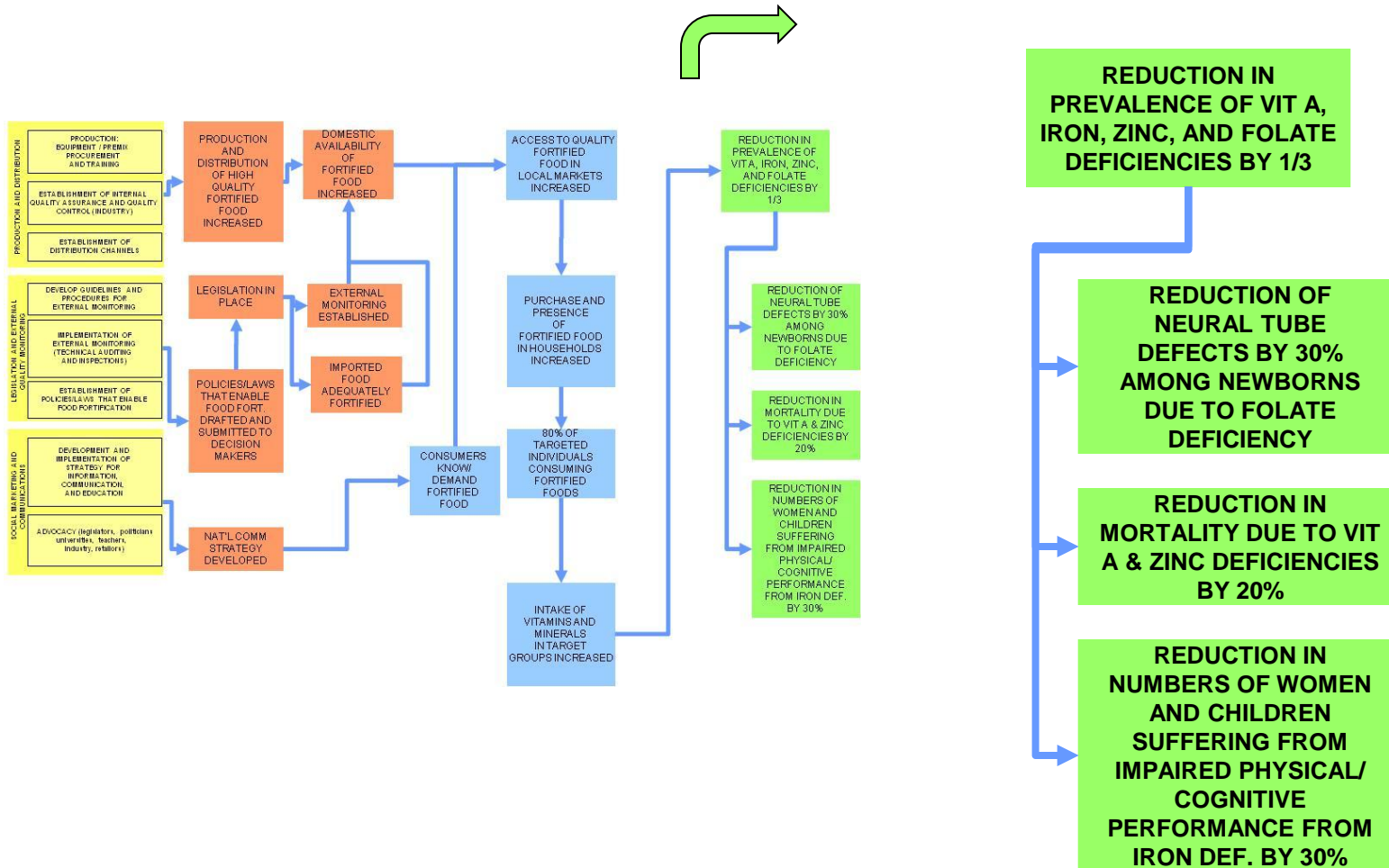
# GAIN's Log Model



# GAIN's Log Model



# GAIN's Log Model



ACTIVITIES

OUTPUTS

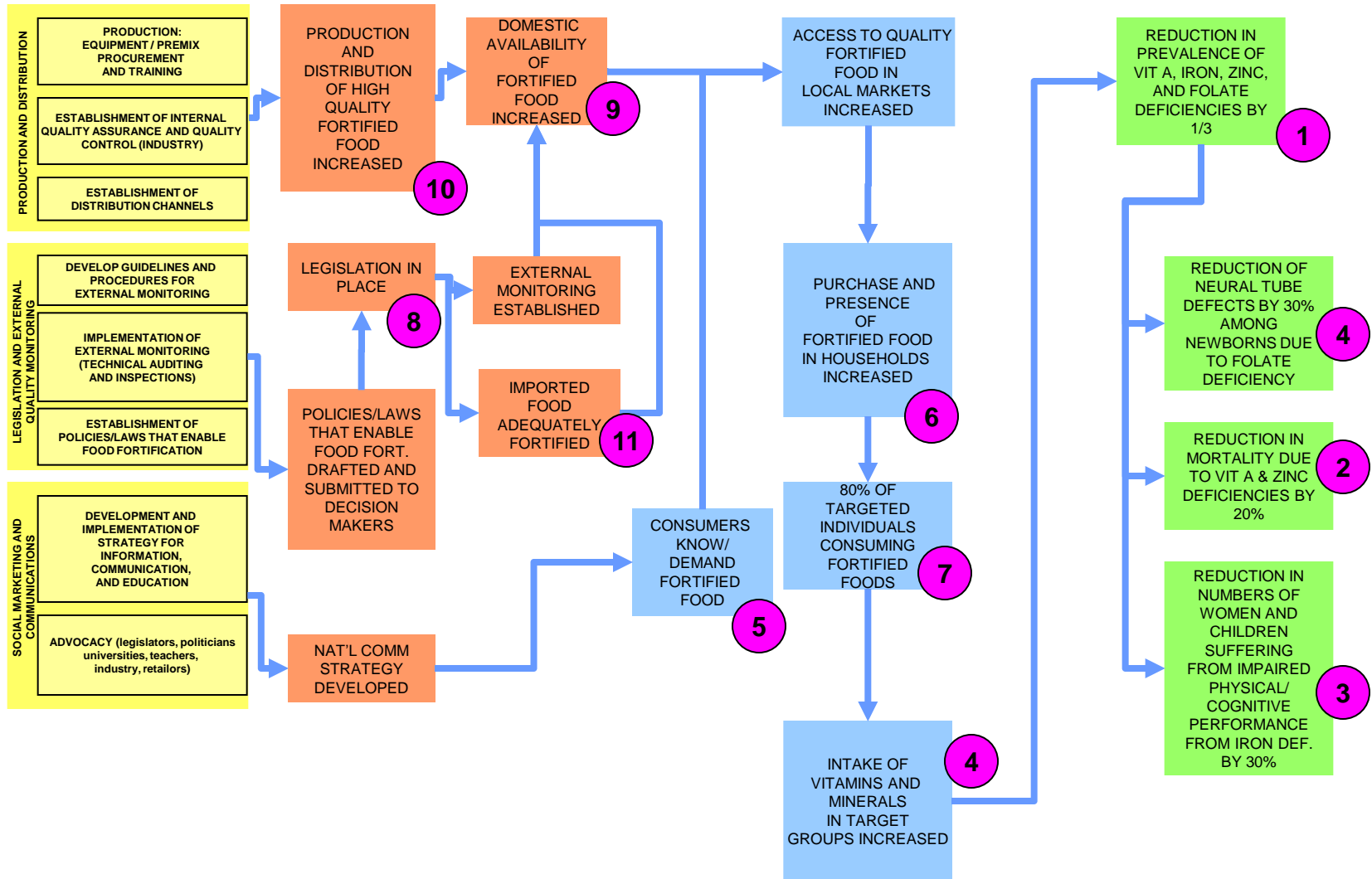
OUTCOMES

IMPACTS

SHORT TERM

MID TERM

LONG-TERM



SEMI ANNUAL REPORTING

Monitoring the Supply and Quality of Fortified Foods

Monitoring Access, Utilization, Reach and Coverage of Fortified Foods

Evaluation of Health and Nutrition Impact



## Country-level logic framework

| Level of Data   | Measurable Indicators   |
|---|---|
| <b>IMPACT:</b>  |   |
| Reduce maternal and child morbidity, disability and mortality associated with micronutrient deficiencies and enhance productivity of populations through expanding the reach of food fortification programs | <ol style="list-style-type: none"> <li>1 Prevalence of vitamin A , iron, zinc and folate deficiencies</li> <li>2 Child mortality due to vitamin A and zinc deficiency</li> <li>3 Number of children and women suffering from impaired physical activity due to iron deficiency</li> <li>4 Rate of neural tube defects such as spina bifida among newborns due to folate deficiency</li> </ol> |
| <b>OUTCOMES:</b>  |   |
| Consumer awareness and demand increased   | 5 % of target consumers that correctly recall health messages associated with logo / fortified foods / specific micronutrient deficiencies  |
| Purchase and presence of fortified food in households increased   | 6 <u>Reach</u> : Absolute numbers of individuals consuming fortified foods  |
| Regular consumption of fortified food among 80% of target groups  | 7 <u>Coverage</u> : Numbers (and %) of target populations consuming fortified foods (disaggregated according to age-sex groups most affected by specific deficiencies and by income)  |

## Country-level logic framework

| Level of Data  | Measurable Indicators  |
|--|--|
| <b>OUTPUTS:</b>  |  |
| <b>Fortification legislation passed</b>                  | <p data-bbox="587 411 653 478">8 Existence of legislation</p>  |
| <b>Domestic availability of fortified food increased</b> | <p data-bbox="587 501 653 568">9 Absolute amount (and market share) of fortified foods available (domestic production and imports)</p> <p data-bbox="587 582 653 649">10 % of samples of fortified foods that pass external inspection</p> <p data-bbox="587 711 653 778">11 % of imports adequately fortified</p> |

# M&E of National Fortification Programs



[www.gainhealth.org](http://www.gainhealth.org)

## Result

### Supply of Fortified Foods

Adequate production/  
importation



### Household / Individual Consumption

Sufficient  
Coverage



### Health Impact

Successful  
Program

# M&E of National Fortification Programs



[www.gainhealth.org](http://www.gainhealth.org)

## Result

## Indicator

### Supply of Fortified Foods

Adequate production/  
importation

- *Absolute amount of fortified food available*
- *% vehicle produced which is fortified*
- *% vehicle produced which is adequately fortified*



### Household / Individual Consumption

Sufficient  
Coverage

*Target pop recall and know about fortified food and logo*  
*Reach*  
*Coverage*



### Health Impact

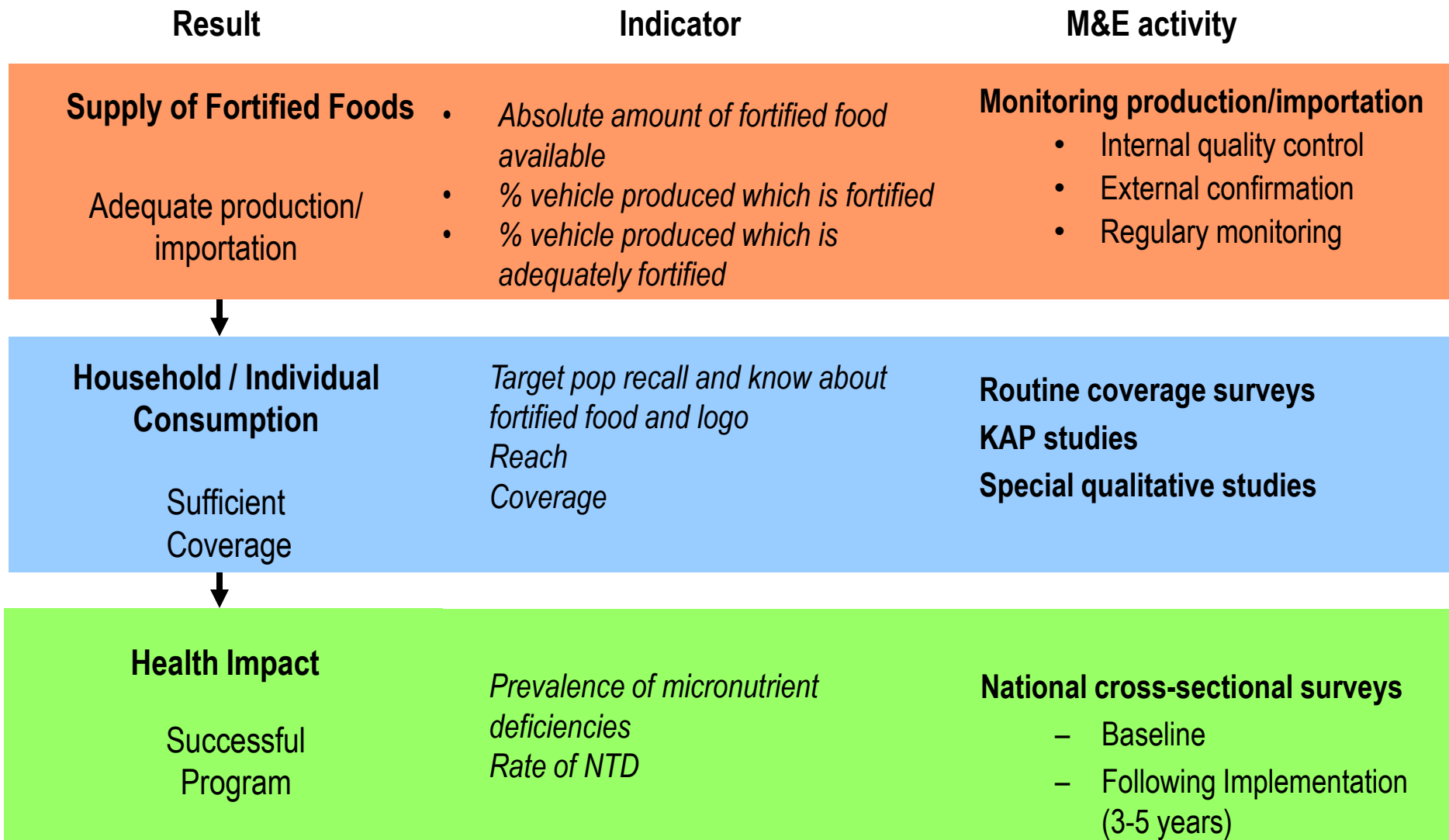
Successful  
Program

*Prevalence of micronutrient deficiencies*  
*Rate of NTD*

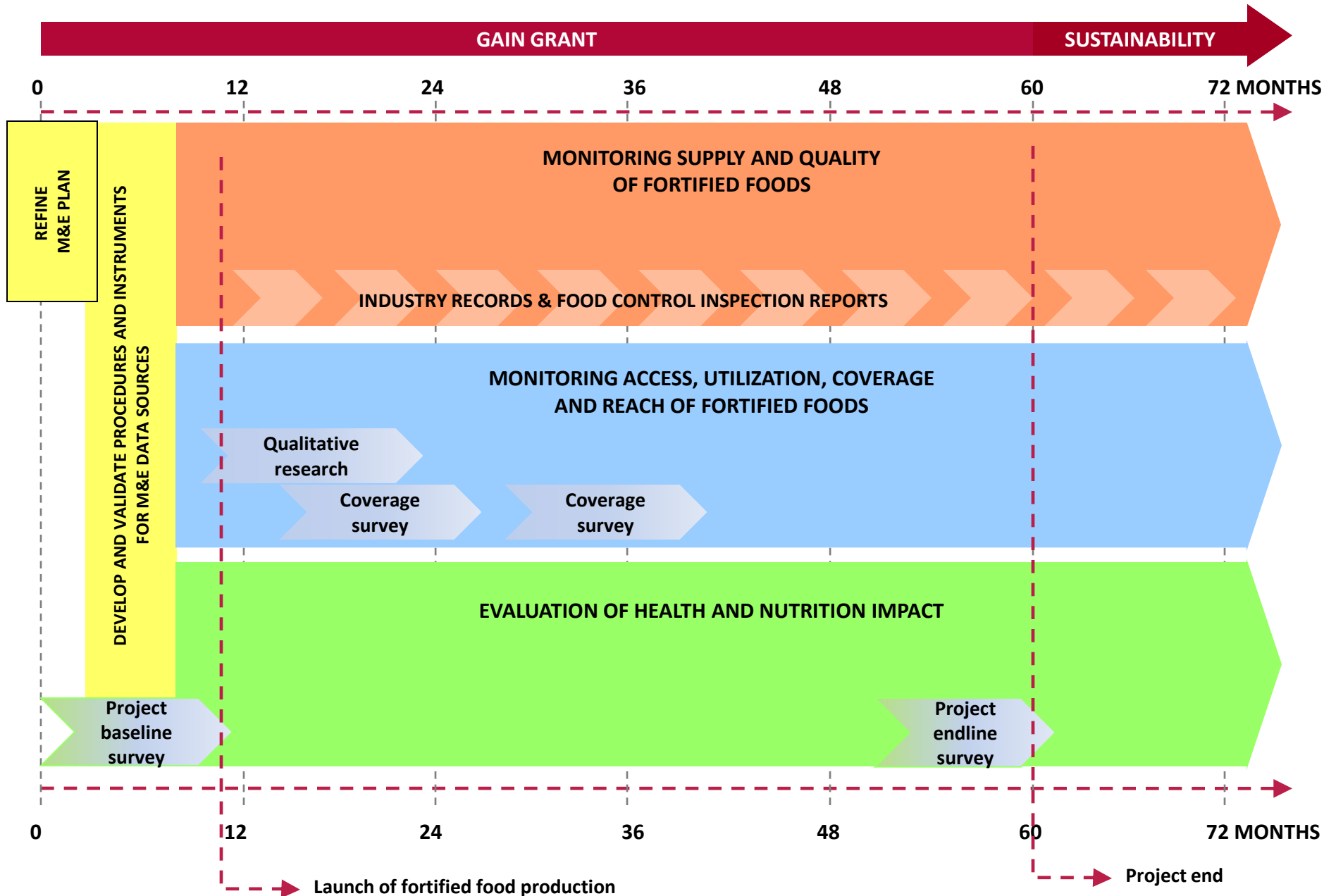
# M&E of National Fortification Programs



[www.gainhealth.org](http://www.gainhealth.org)

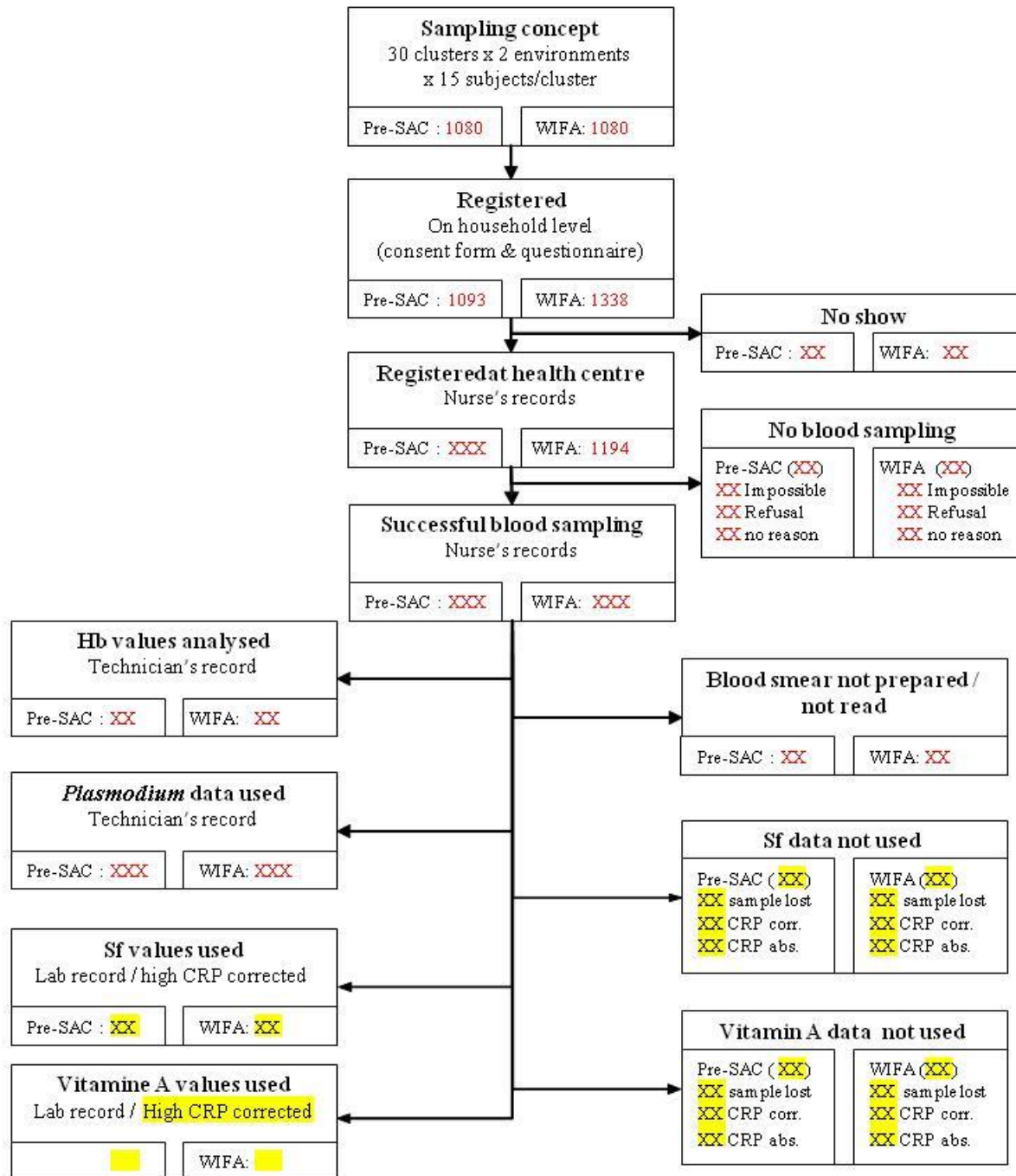


# Timeline of M&E Activities



# GAIN M&E Toolkit

- Volume 1: Guidelines
  - Chapter 1: GAIN Performance Measurement **Framework**
  - Chapter 2: **Country-level** Food Fortification M&E Systems
  - Chapter 3: Monitoring the **Supply and Quality** of Fortified Foods
  - Chapter 4: Monitoring **Access, Utilization, Reach and Coverage** of Fortified Foods
  - Chapter 5: Evaluation of Health an **Nutrition Impact** and **Program Impact**
- Volume 2: Instruments





Thank you!



[www.gainhealth.org](http://www.gainhealth.org)

